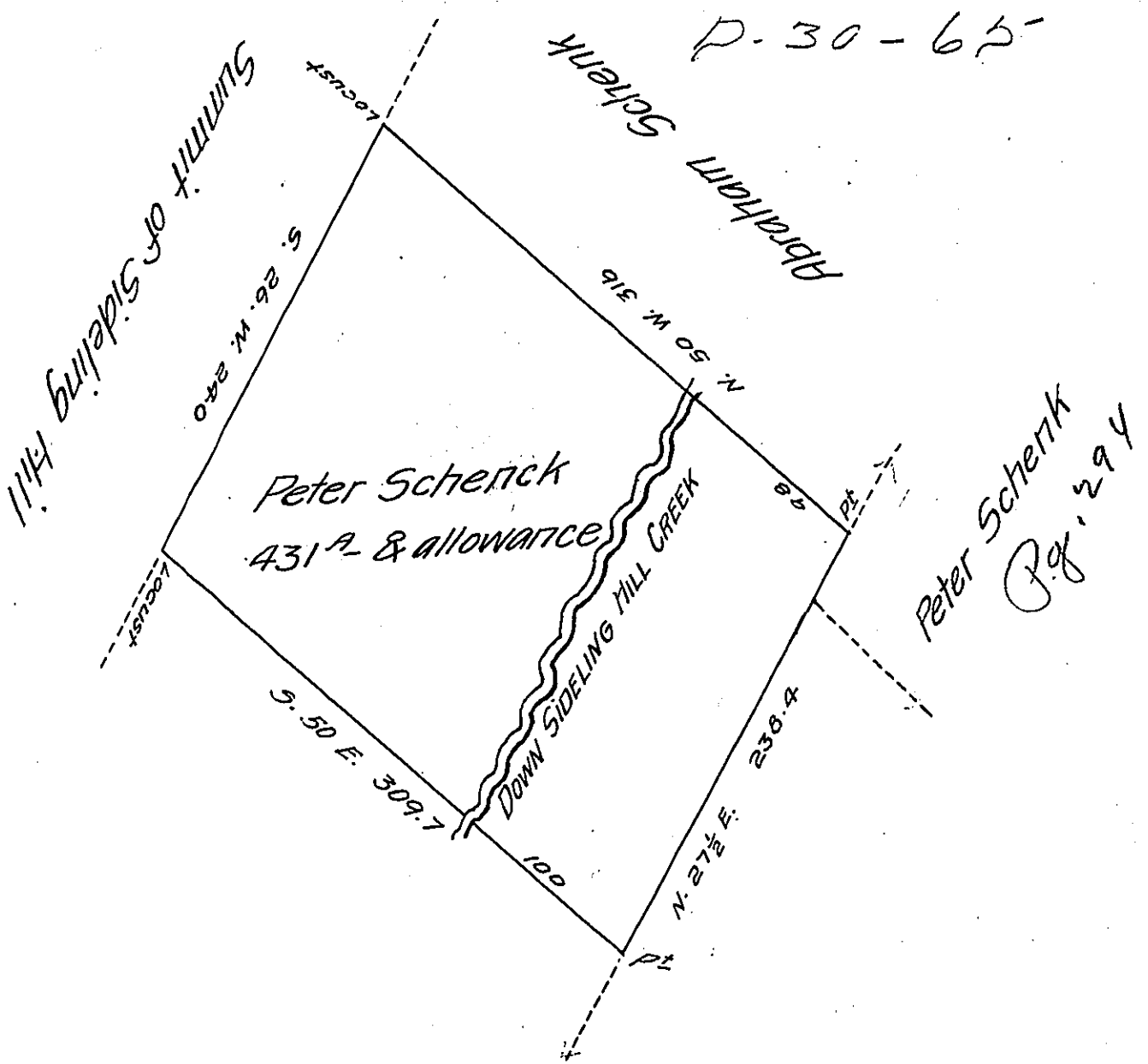


FORM NO 1.



Situate on Sideling Hill Creek on the East Side of Sideling Hill Mountain about Two and an half Miles south from Juniatta River in Union township Huntingdon County containing Four Hundred & thirty one acres and allowance of Six per Cent &c. first Surveyed in the fall of 1794 and re-surveyed agreeable to the old lines found on the ground the 17<sup>th</sup> day of March 1830 In pursuance of a Warrant Granted to Peter Schenck Dated the 1<sup>st</sup> day of Sept<sup>r</sup> A.D. 1794 Examined & approved Sept<sup>r</sup> 1<sup>st</sup> 1830

Per Wm Reed D.S.

To Jacob Spangler Esqr }  
 Surveyor General }

IN TESTIMONY that the above is a copy of the original remaining on file in the Department of Internal Affairs of Pennsylvania, made conformably to an Act of Assembly approved the 16th day of February, 1833, I have hereunto set my Hand and caused the Seal of said Department to be affixed at Harrisburg, this twentieth day of March 1907

*Geo. D. Brown*  
 Secretary of Internal Affairs.